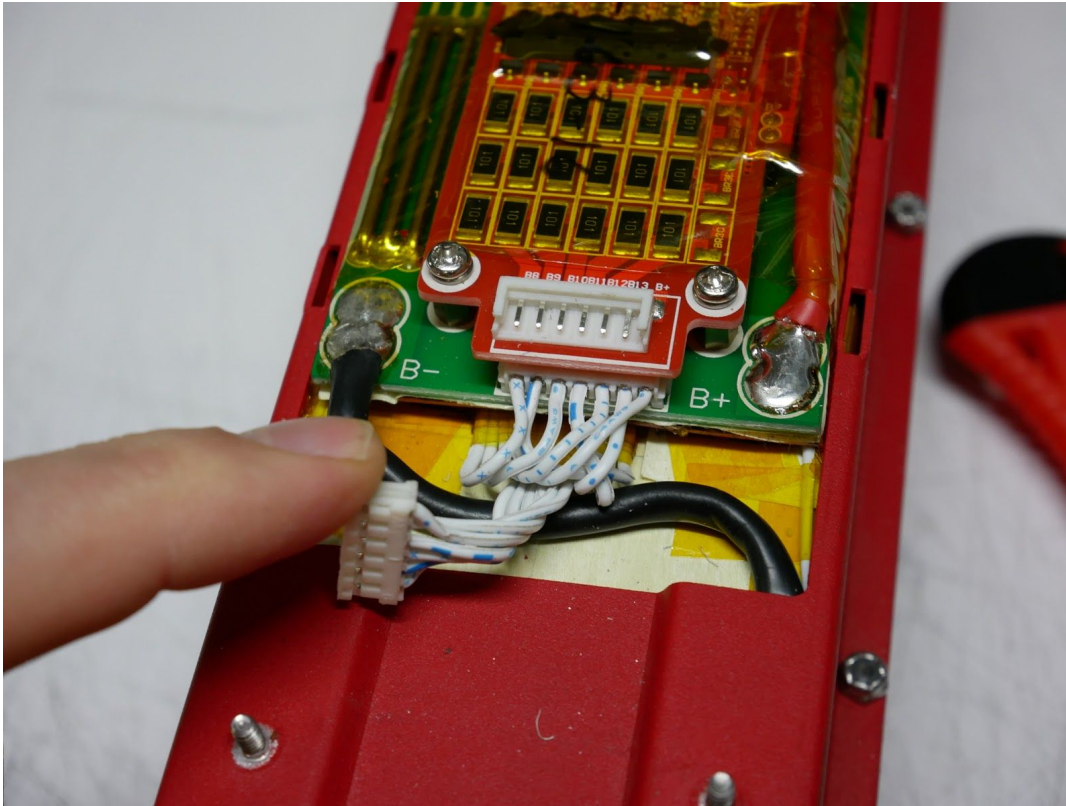


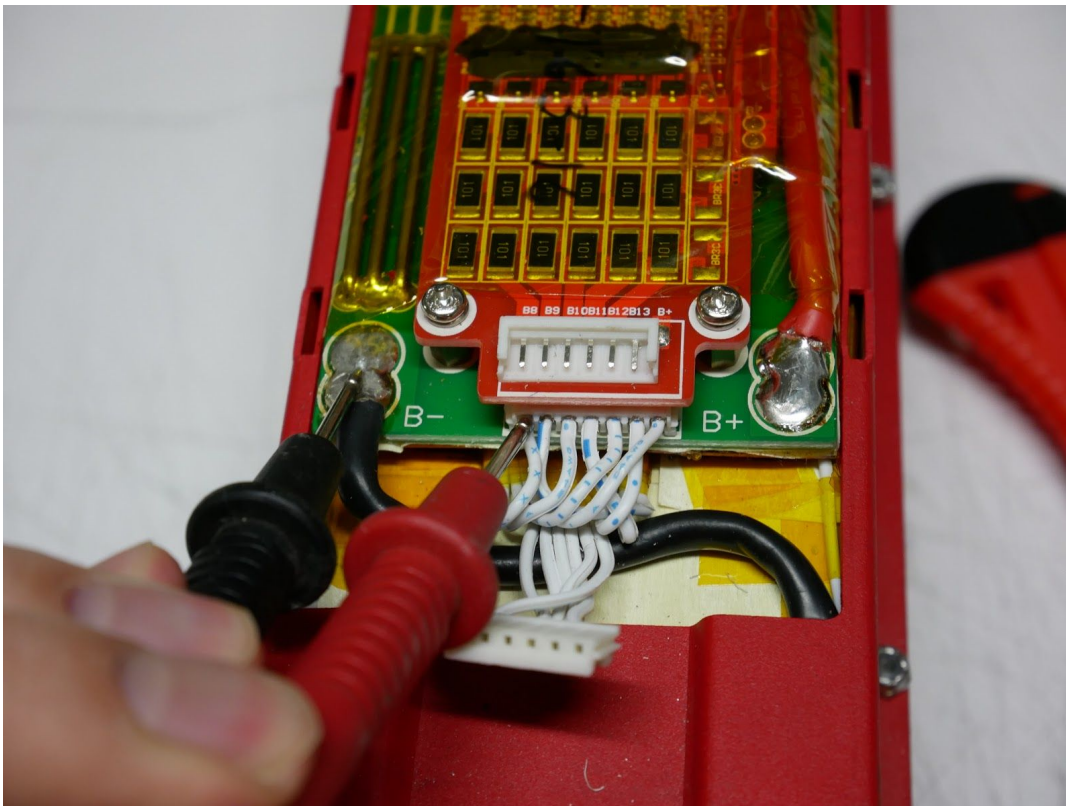
# Checking Cell Voltages

Optibike LLC - 3/14/19

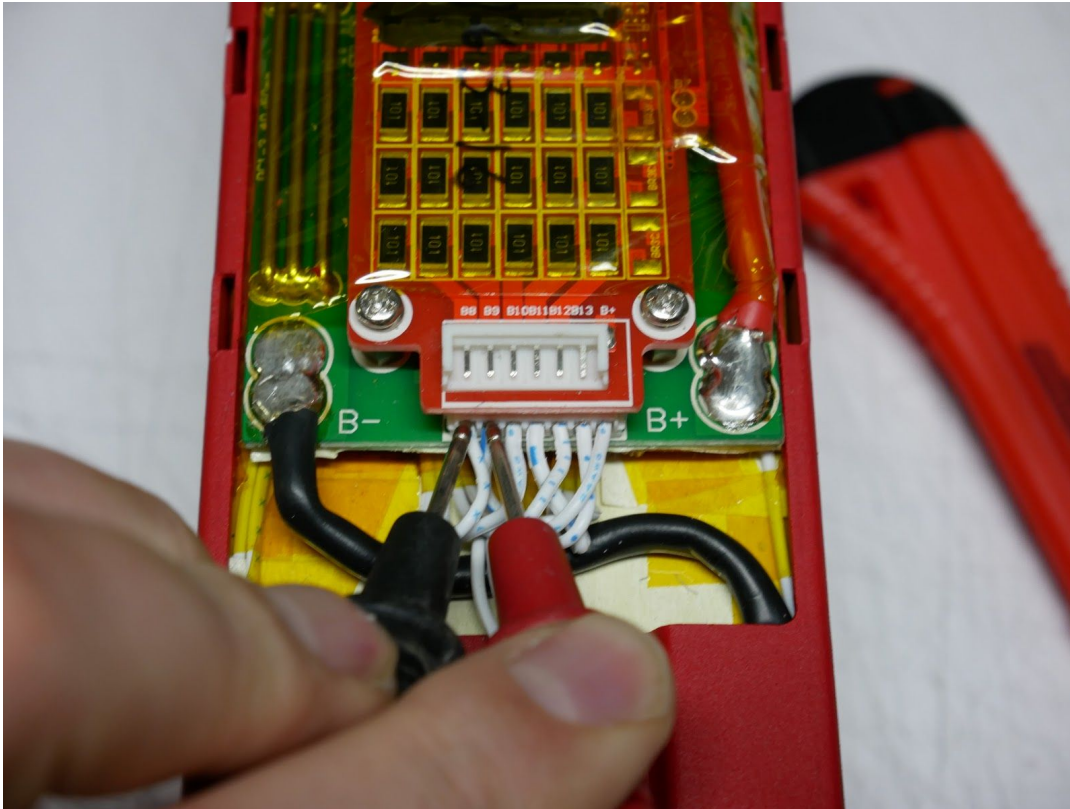
Remove the upper sense wire connector to make it easier to get to the bottom connector. You may need to remove tape from the connector first. The connector should come out with a bit of wiggling and pulling. (Don't use any metal tools to help remove the connector).



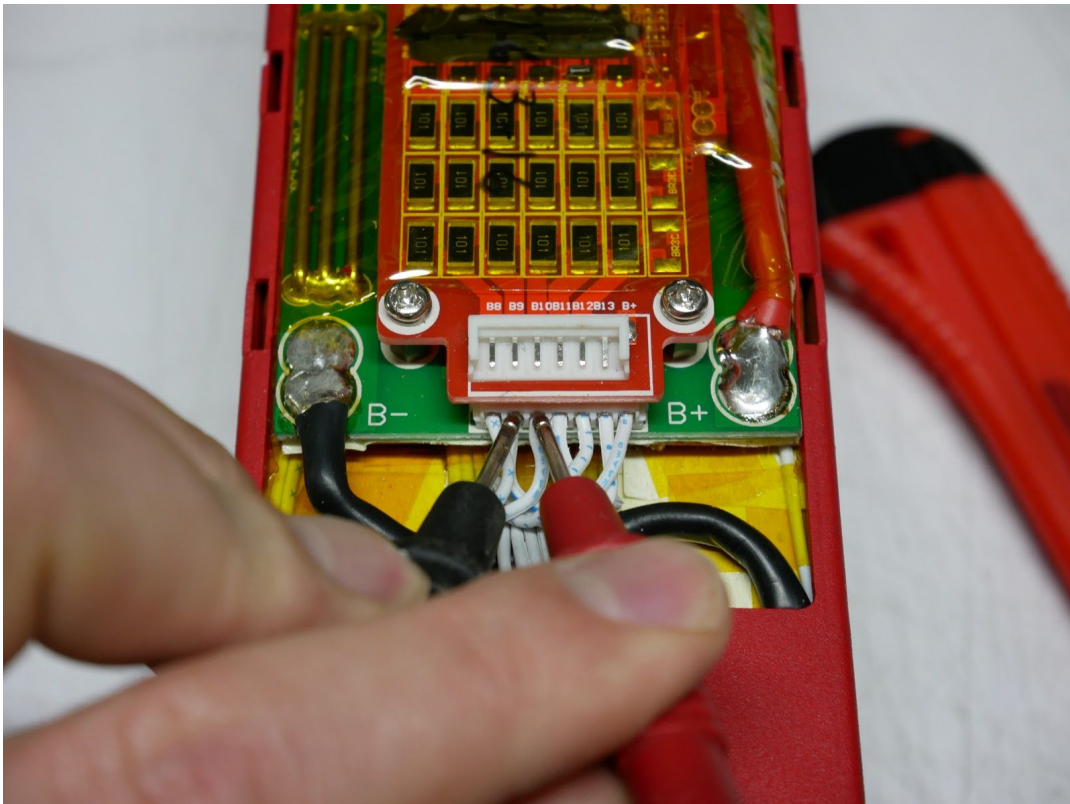
To measure Cell #1 you need to measure from the **large black wire** on the PCB, to **pin #1 on the connector**.



For Cell #2 measure from pin #1 to pin #2.

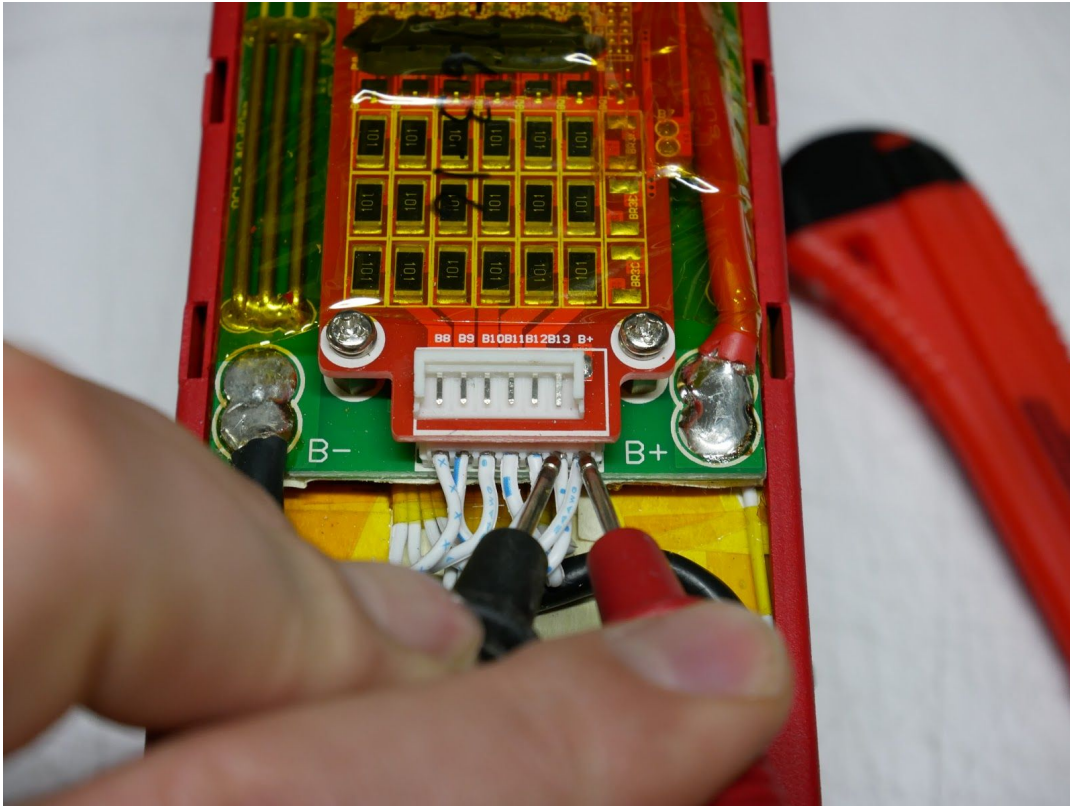


For Cell #3 measure from pin #2 to pin #3, and so on.

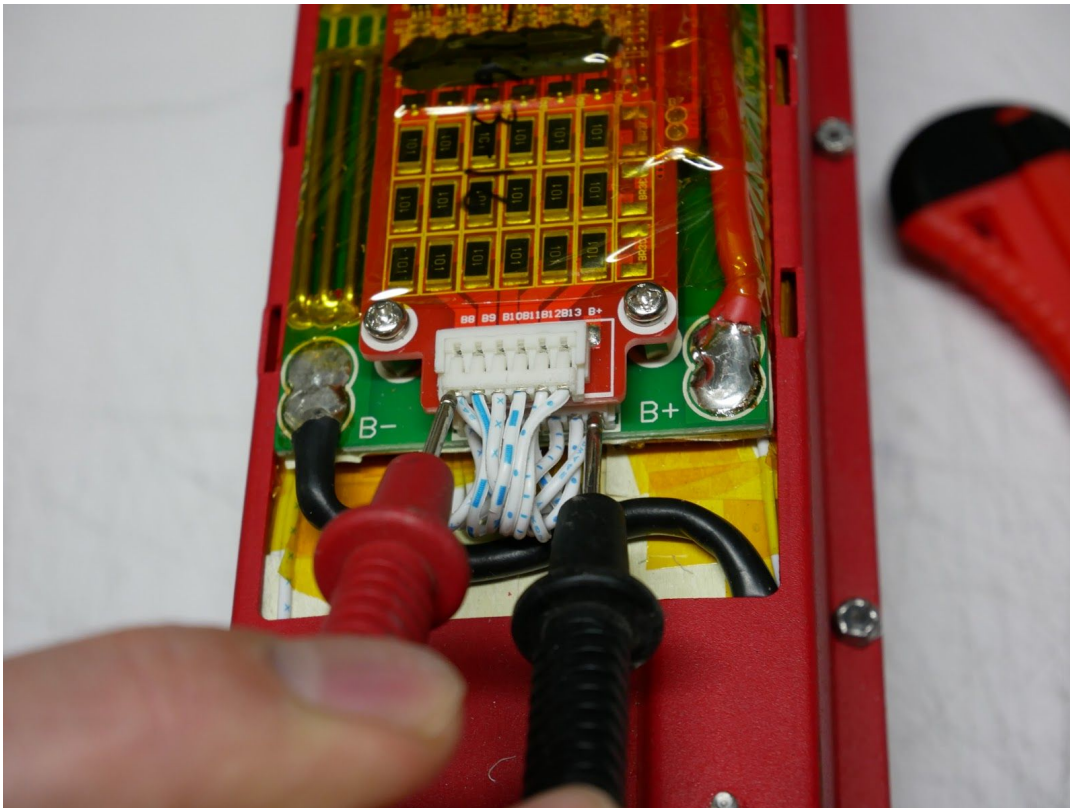




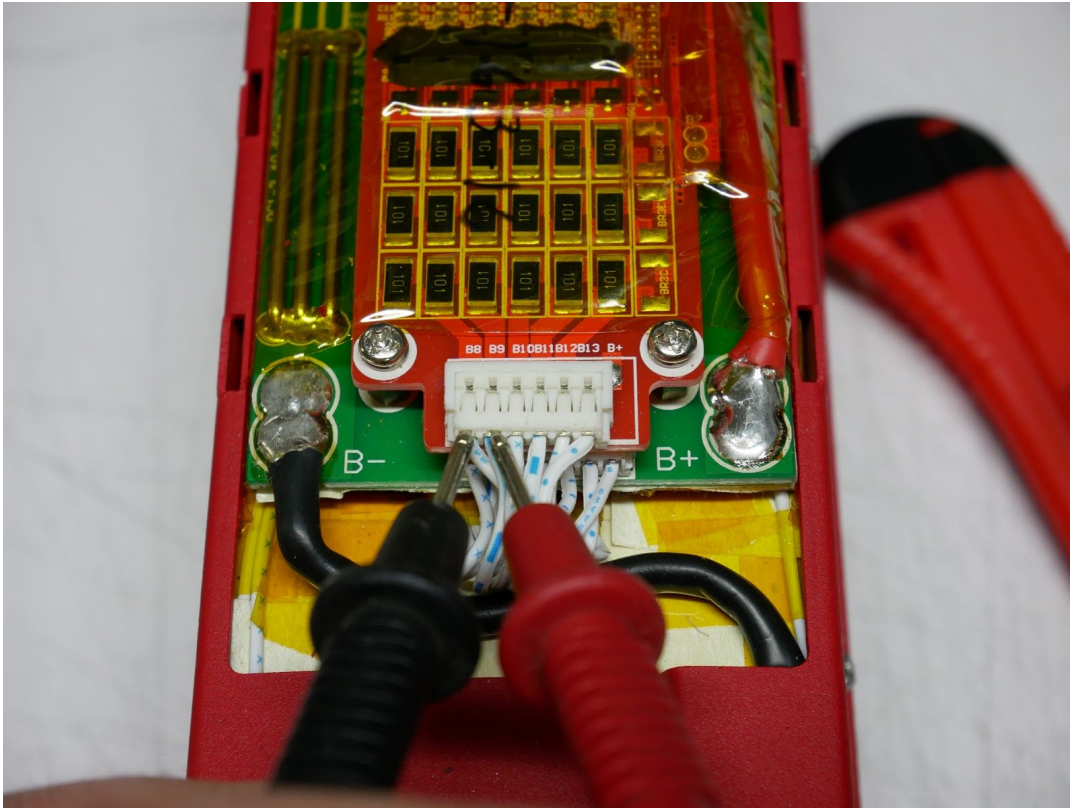
Repeat the same way until you get to the end of the connector (Cell #7).



Plug the upper connector back into the BMS, and measure from the **last pin on the lower connector**, to the **first pin on the upper connector** to get the voltage of Cell #8.



Move to the **upper connector** only, and measure from pin #1 to pin #2 to get the voltage of Cell #9.



Repeat the same way until you get to the end of the connector (Cell #13).

