

Changing Your Throttle

R and M Series

Please read all steps before attempting to complete.

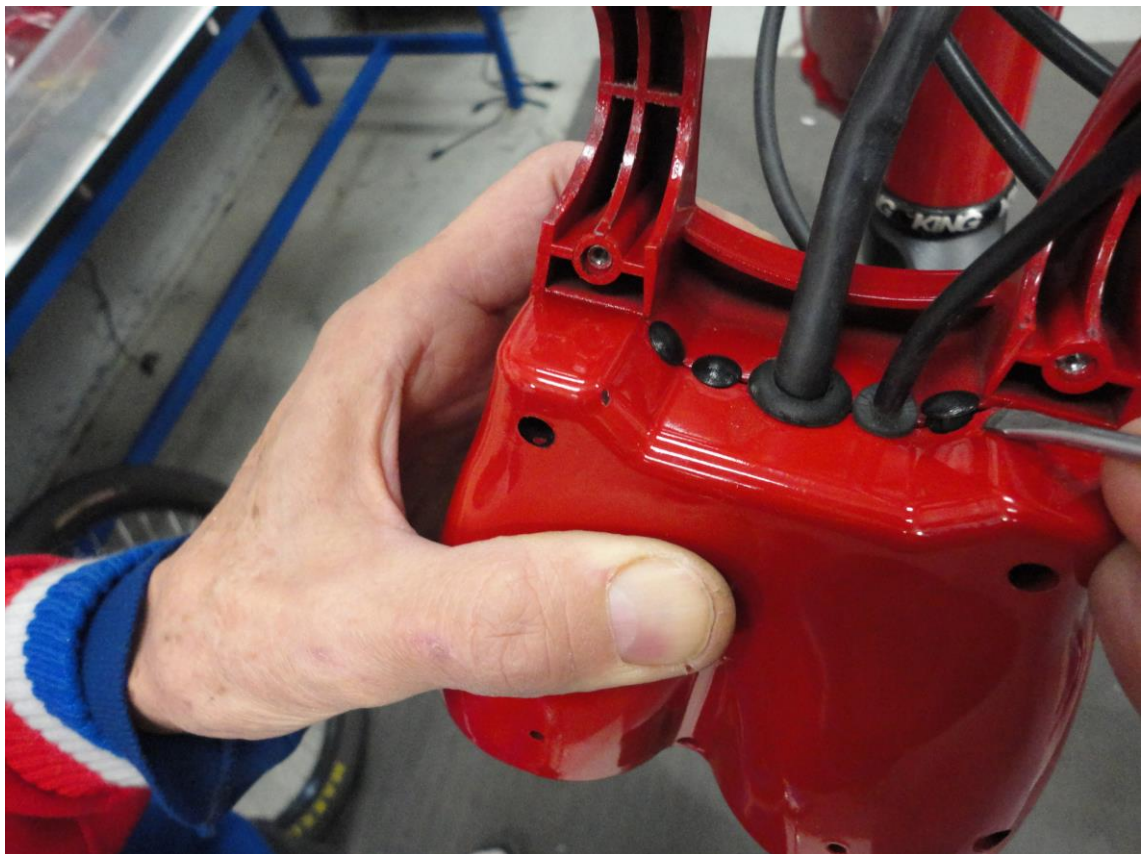
1. Remove grip using a 2.5mm (ODI or Cane Creek Grips) or 4mm (Ergon Grips) allen.

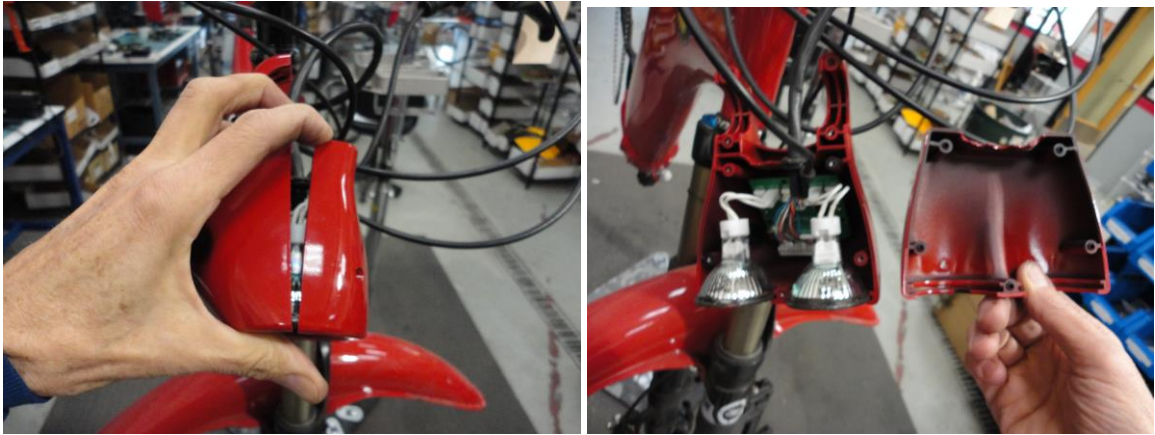


2. Remove headlight bracket clamps using a 2.5mm allen.

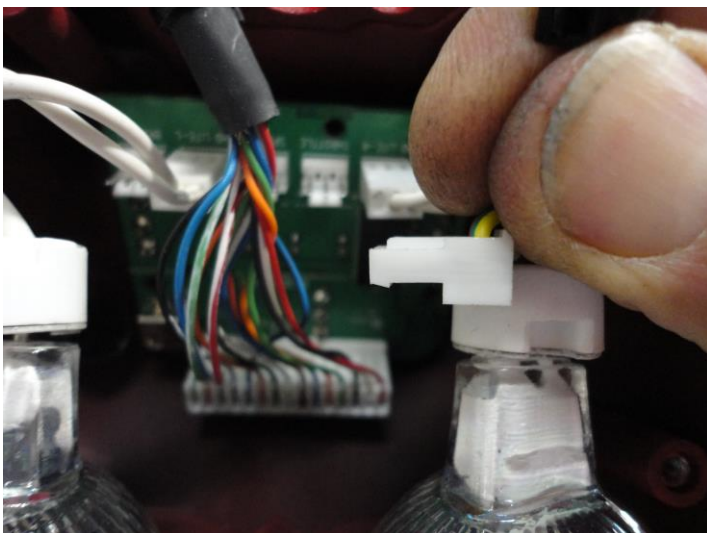
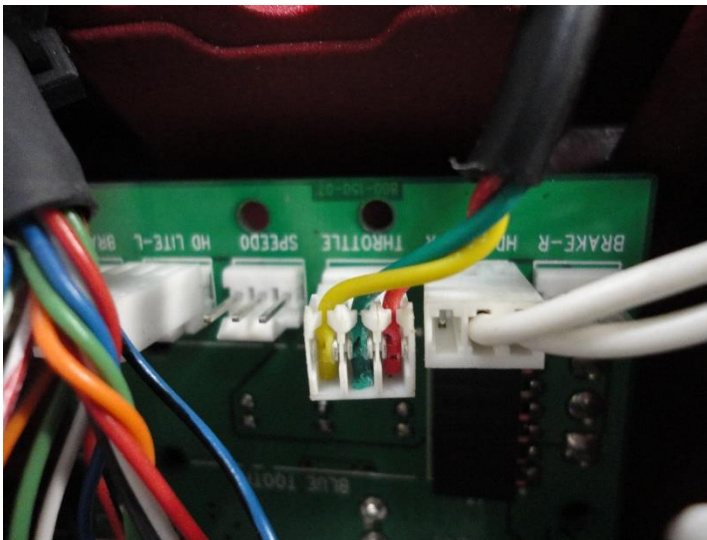


3. Remove bottom of headlight body using a 2.5mm allen. Be careful when you have all 5 screws out as there are 3 caps that could fall out. (see picture)





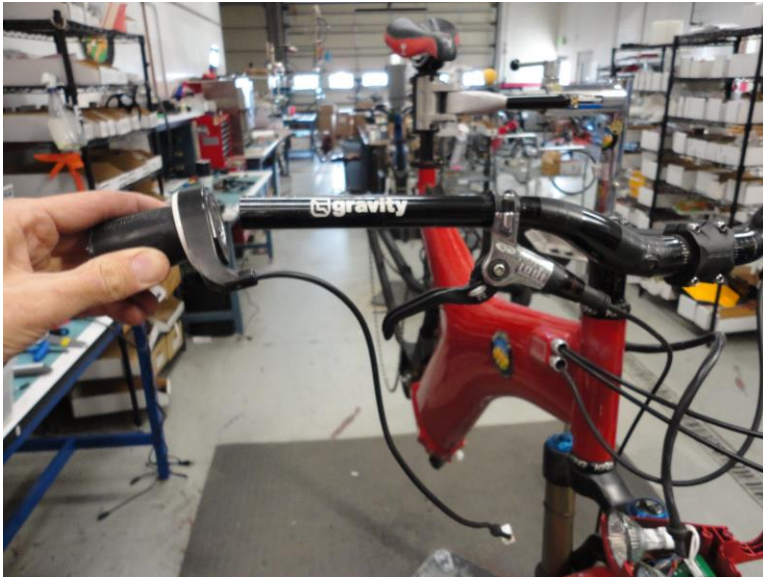
4. Pull off the throttle connector from the display board.



5. If there is a zip tie connecting your throttle cable to the brake line, clip that off now.



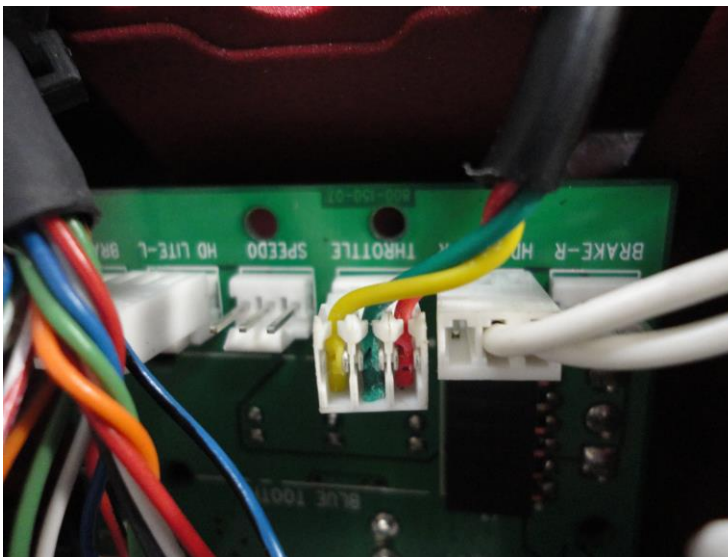
6. Loosen clamp on throttle using a 2.5mm allen and slide off handlebar.



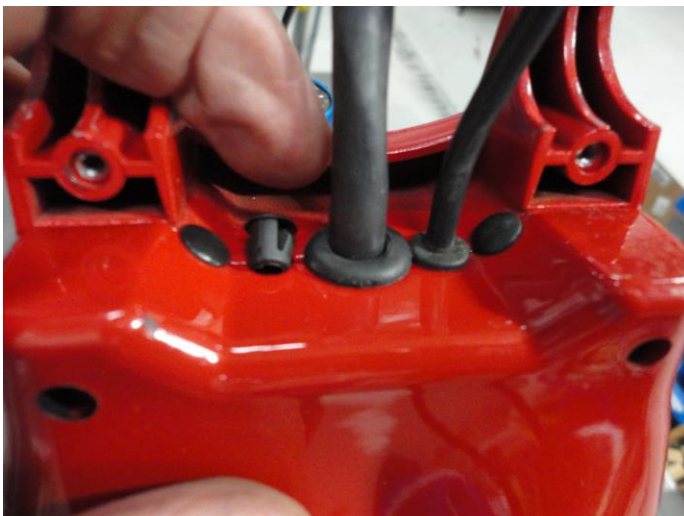
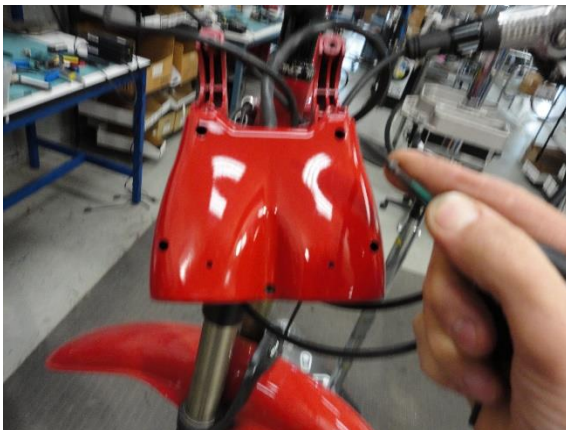
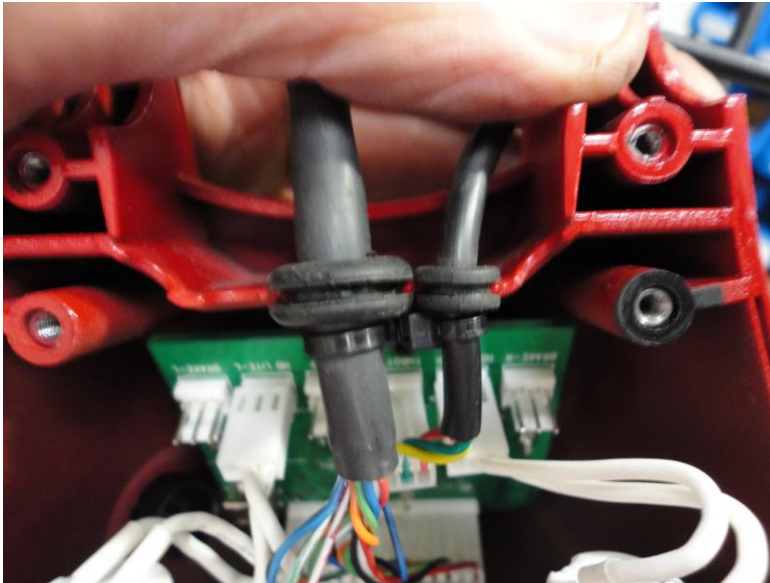
7. Slide on new throttle and tighten using a 2.5mm allen.
8. Slide on grip and tighten down using a 2.5mm (ODI or Cane Creek Grips) or 4mm (Ergon Grips) allen.



9. Connect the new throttle connector to the display board. Find the connection labeled 'throttle'.



10. Reinstall the headlight body's bottom section, ensure that the headcable and throttle cable gaskets are routed through the headlight body as shown. Note: It is easiest to wait until you have already tightened the headlight body together before inserting the 3 plastic $\frac{1}{4}$ " plugs.



11. Install your headlight body onto the handlebars using a 2.5mm allen. Make sure your cable routing is very similar to the picture and zip tie the throttle cable to the brake line for a clean and secure look.





12. Gently return headlight body into regular position (pretty much level with the ground) and test to see if the new throttle works and headlights turn on. (one headlight in picture is brighter due to the camera angle).



You have successfully installed a new throttle!