

## Removing and Installing a Display Board

Please read all steps before beginning procedure.

1. Using a 3mm allen remove headlight body brackets.



2. Remove the bottom of the display board using the same 3mm allen. There are 5 screws holding it together.



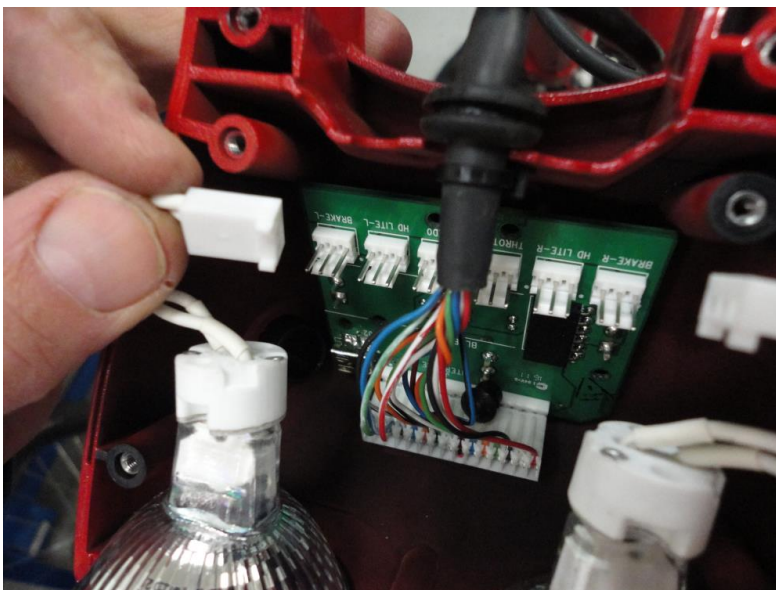
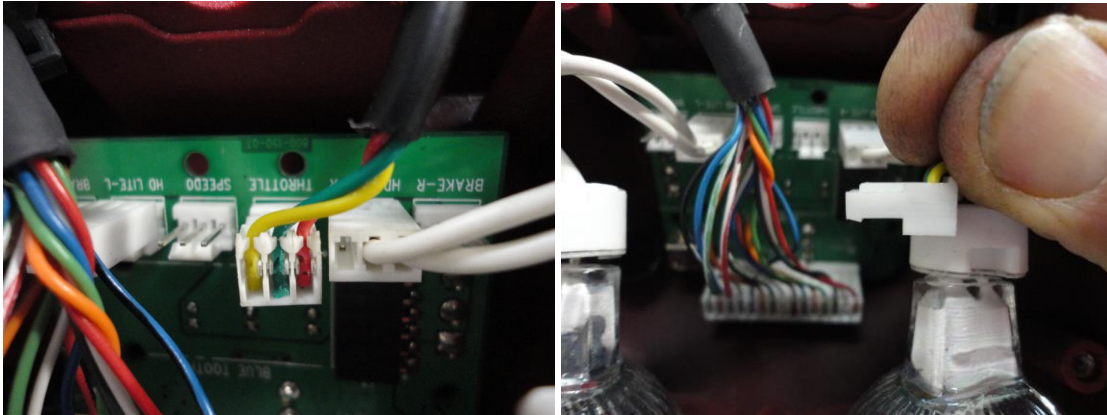
3. Carefully separate the top from the bottom. This will require some force as the headlight bulbs have double sided tape on them to make a seal with the headlight body.

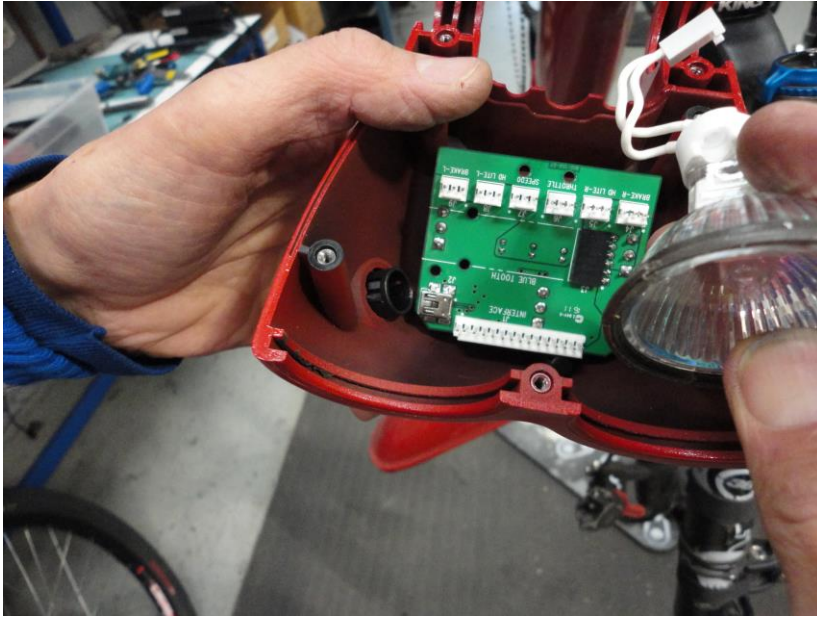






4. Remove all connections from the display board.





5. Using a 10mm socket or wrench remove the 3 toggle boots that are holding the display board onto the headlight body.



6. You can now gently but firmly remove the display board from the headlight body.

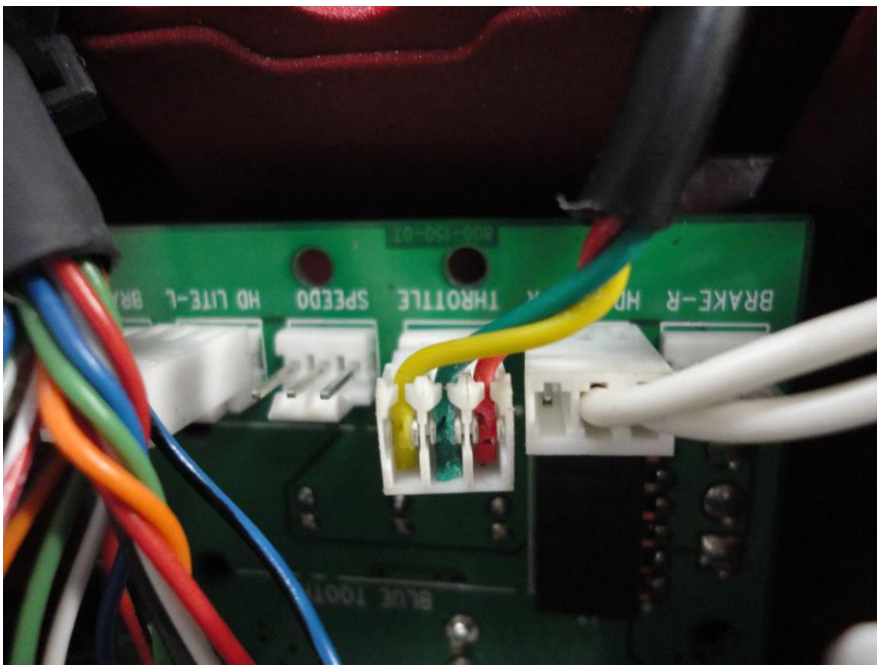
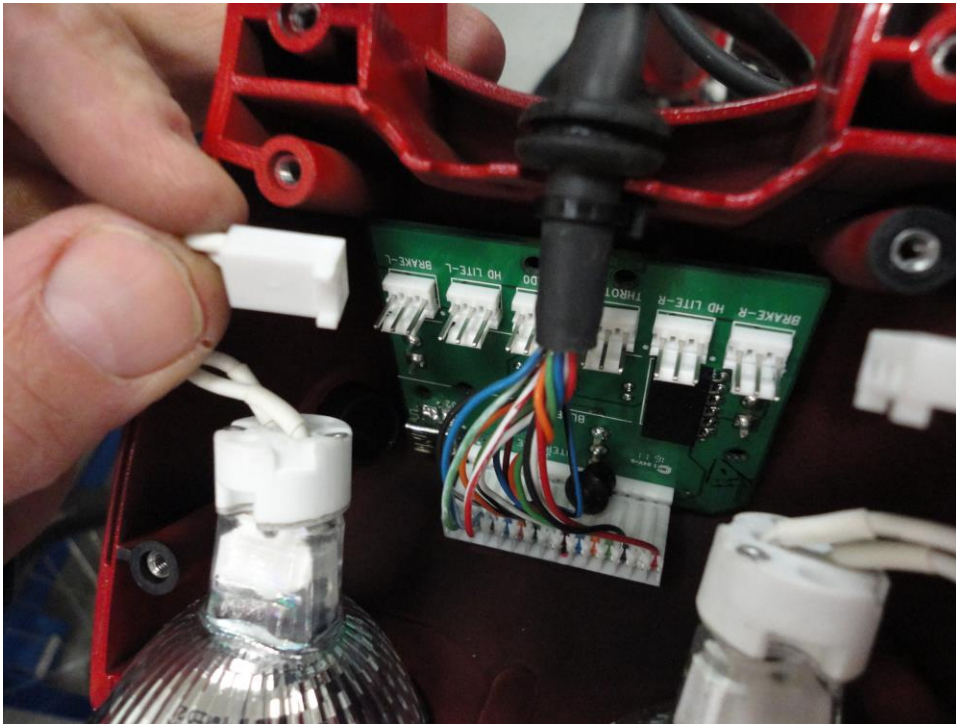


7. Now you can install your new display board, by gently pressing it into the headlight body and tightening the toggle boots back on.

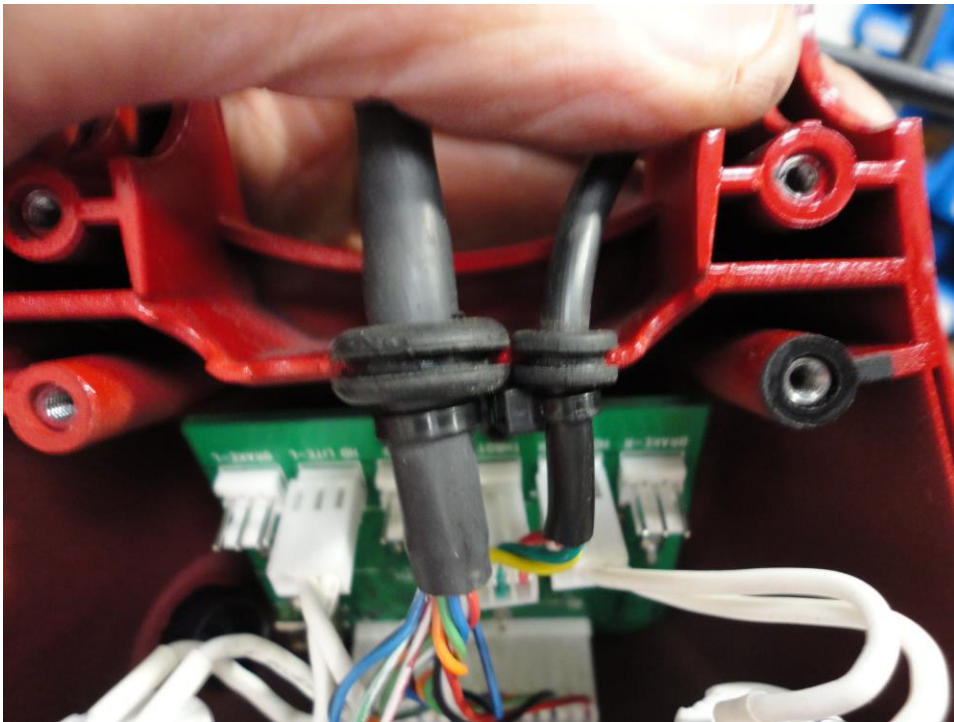




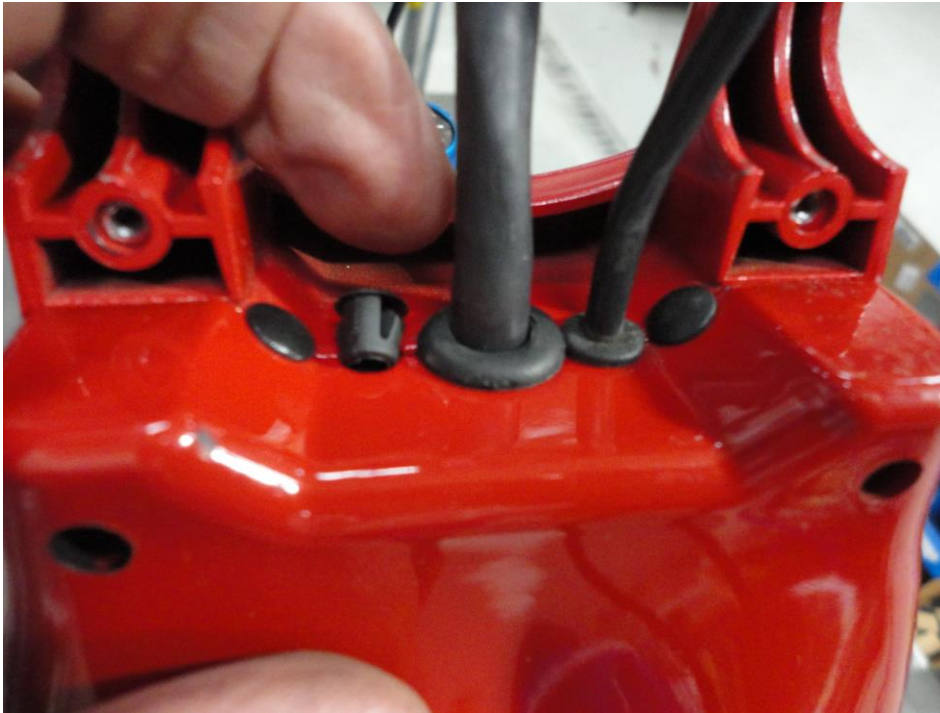
8. Reinstall the headcable, throttle, and headlight bulbs back into the proper connections.



9. At this point you will want to make sure all your cable routing looks fine and align the headcable and throttle grommet as shown. And press and hold the bottom of the headlight body to the top while screwing in the 5 3mm screws.



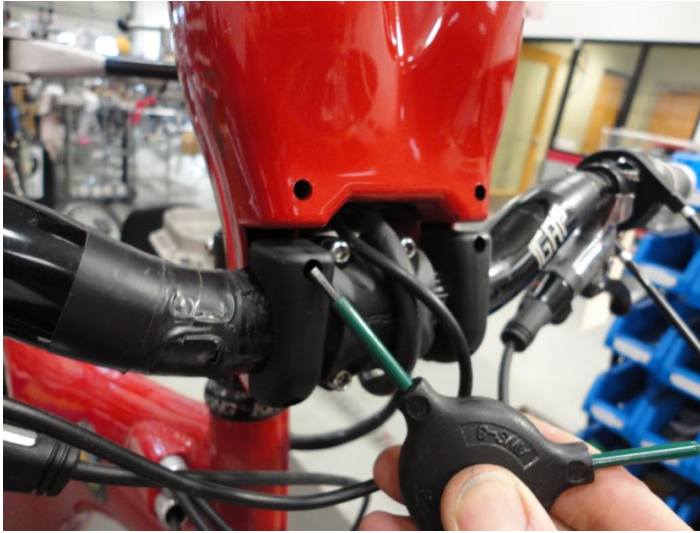
10. Once you have all 5 screws holding the headlight body together press in the 3 plastic plugs as shown.



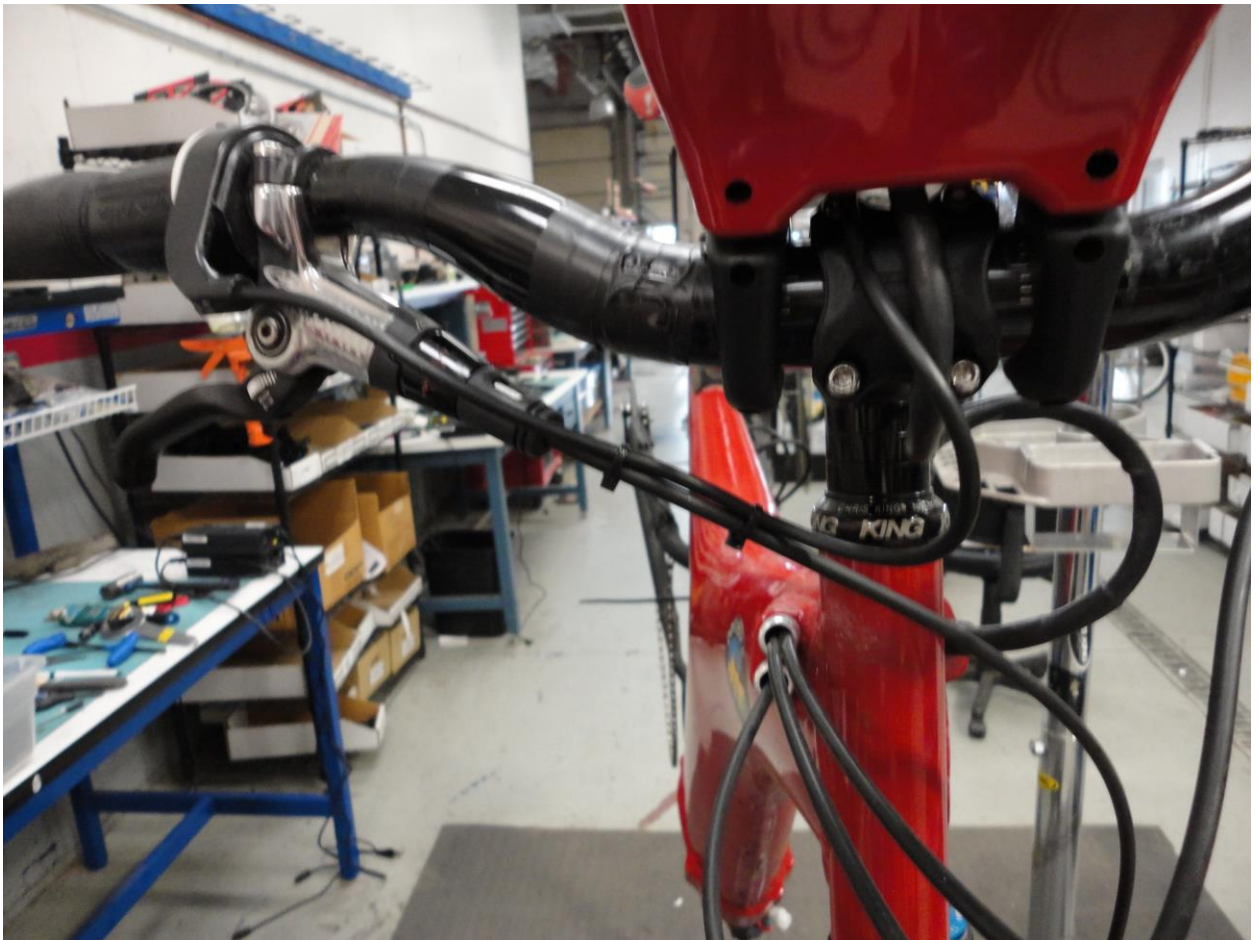
11. You can now reinstall the headlight body to the handle bars.







12. Cable routing should look something like this when it is all done.



13. Now is a great time to test to make sure everything works properly. Turn on your bike and test the headlight bulbs.



14. While holding up the rear wheel you can test to see if the throttle works as well. Once confirmed get out there and ride!!

