

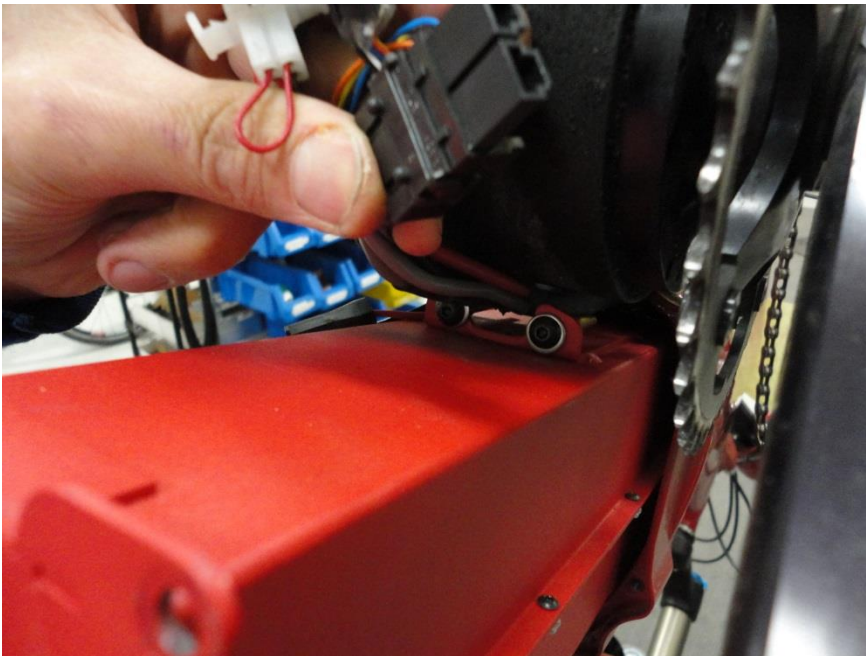
## INSTALLING A BATTERY

Please read and review each step a few times before attempting to work on your bike to ensure you understand the workflow and are comfortable attempting them before proceeding.

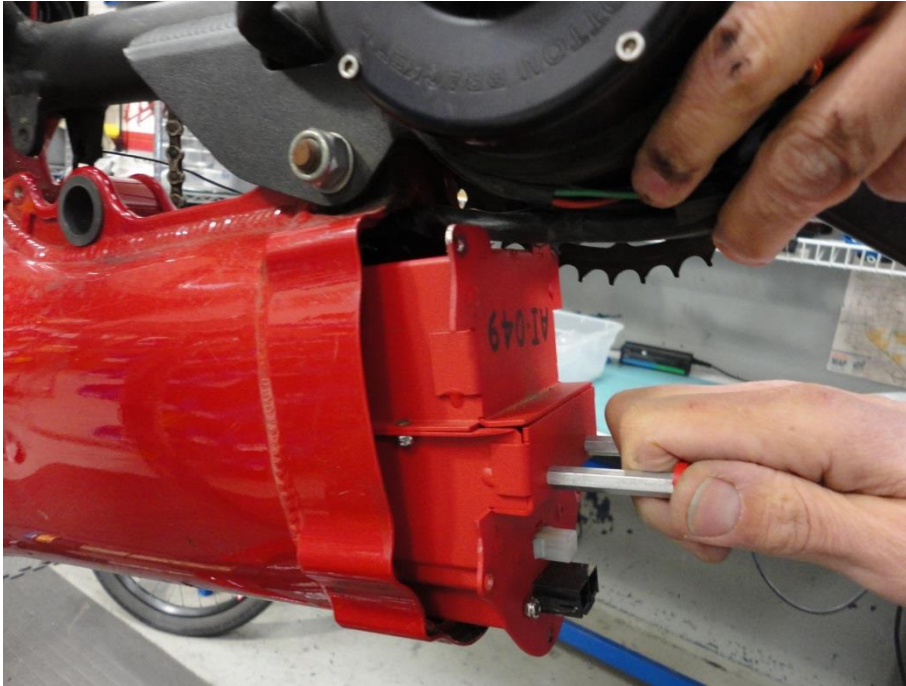
1. Hold up wires to allow battery to easily slide into frame without interference.



2. Begin to guide battery into frame as shown. While centering wires so the battery support pins do not catch on them.



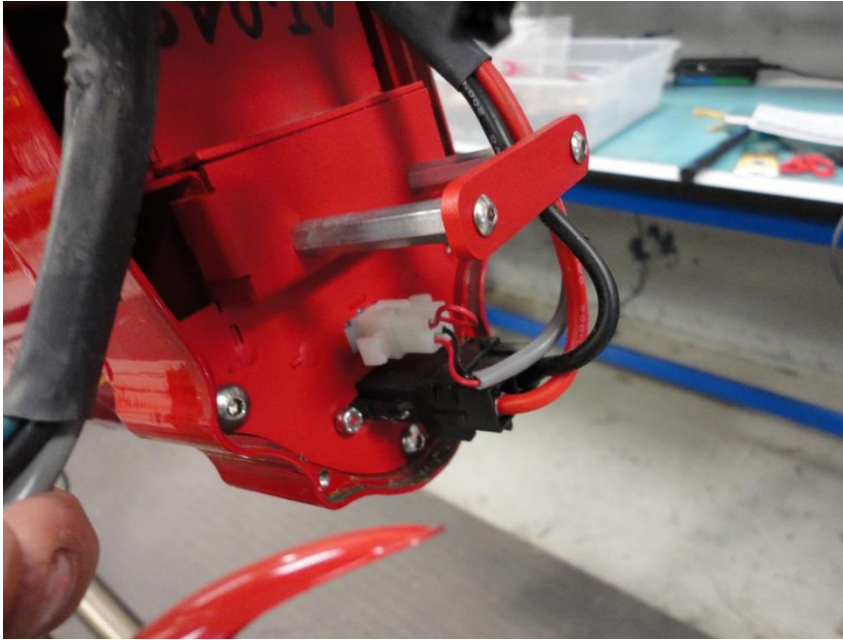
3. Continue firmly sliding the battery into the frame. At about the point pictured the battery pins should find the holes they sit in (this may require a little jostling to find the holes). Once aligned properly a decent amount of force may be required to fully seat the battery.



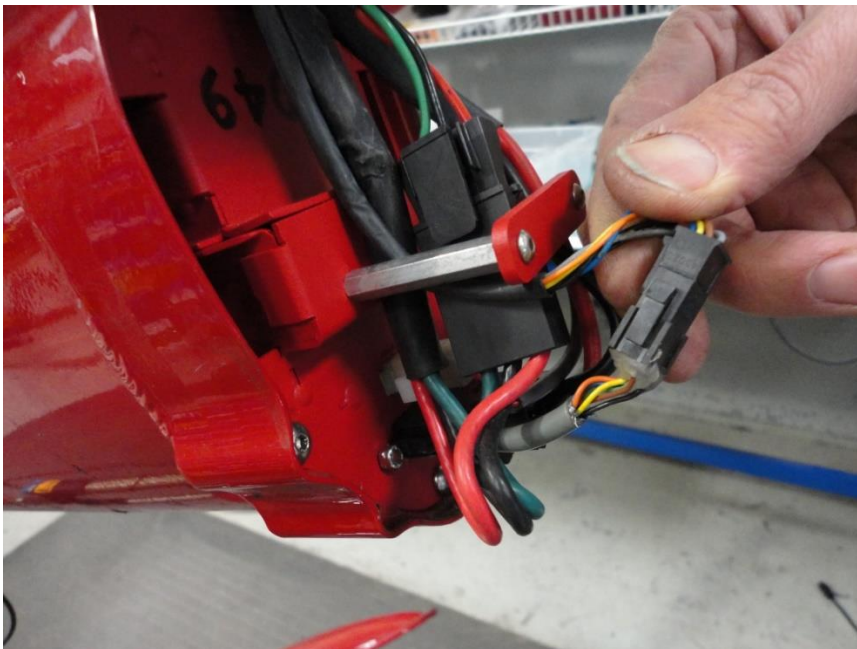
4. Once seated screw in the five battery mount screws using a 3mm allen tool. Now your battery is secure in your frame.



5. Making sure your relay and headlight switches are in the off position. Now you can connect your battery. Orient the wires as shown.



6. At this point you can connect the motor back up as well. Once everything is connected visually ensure that each connection looks solid and no loose wires or pins are visible. Note that all the wires and connections are centered in where the battery cap will fit.

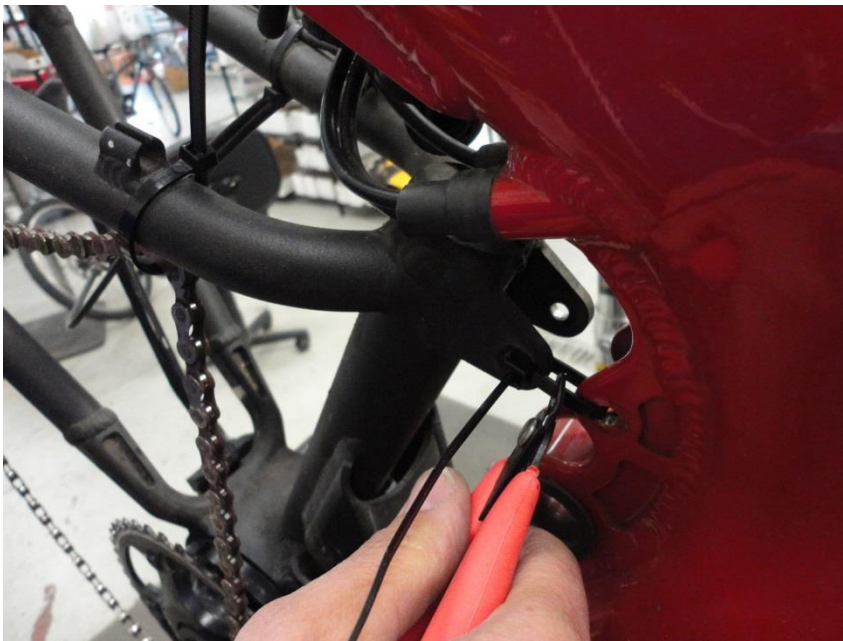


7. Now is a good time to turn on your bike and test to ensure it turns on and motor works before proceeding to the next steps. If by chance your bike does not turn on first try plugging in a charger to see if that 'wakes' up your bike. If not begin a closer inspection of the connectors.
8. Now install the battery cap using the 4 provided screws with a 2.5mm allen. Make sure not to pinch any wires while doing so. This can be achieved by centering the wires where they exit as shown. Note: in picture the top two battery mount screws are not installed (make sure yours are)





9. It is a good idea to test your bike again before reinstalling your rear shock.
10. You have successfully installed your battery!
11. Now begin to reinstall your rear shock by first cutting the zip tie used to hold up your swingarm and gently lowering it into place.

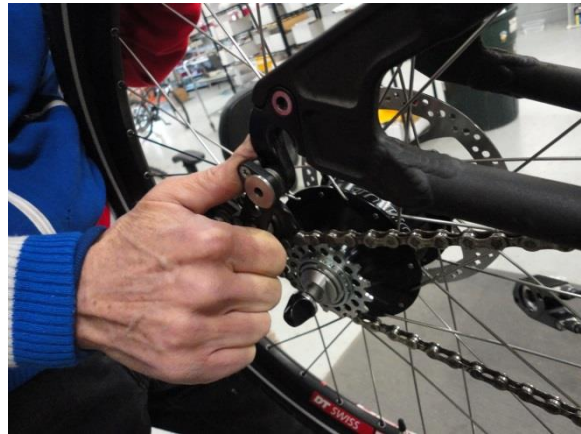


12. Align the rear shock as shown and securely tighten down. This is achieved using a 5mm allen and 10mm open ended socket.



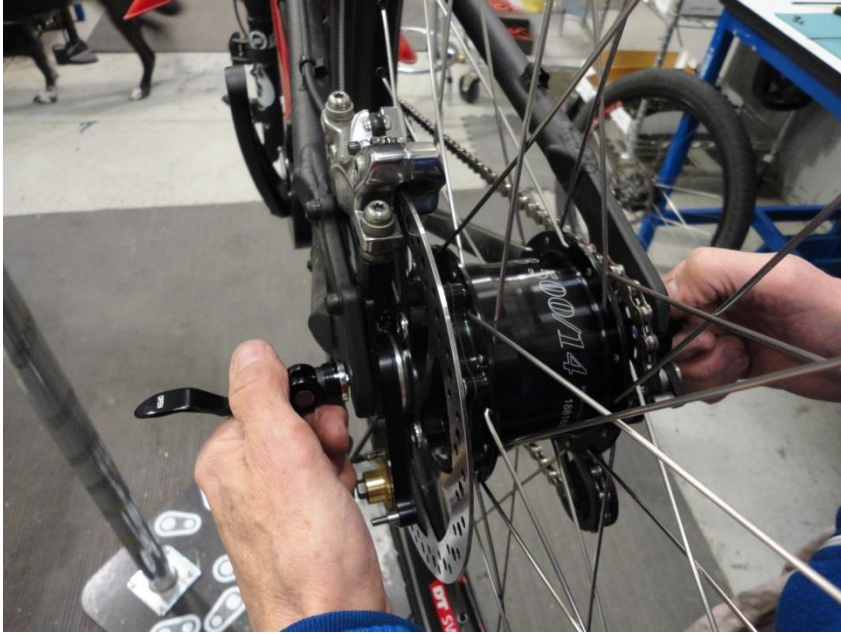


13. Now it is time to reinstall your rear wheel. Make sure if you have a rohloff that the rohloff anti rotation tab is aligned with its mating end. (In this picture it is the monkey bone) a slot cut into the brake mount.





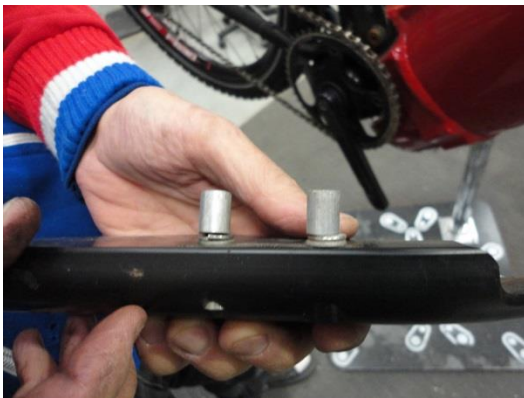
14. Tighten down the quick release. Test to make sure the wheel spins freely.



15. Now while in 14 gear attach the rohloff gear box to the transfer arm. Subtle movement of the shifter can help align the two while installing it.



16. Now you need to install your chainguide. Once completed make sure it does not rub the chain (adjust as needed) Note: use the top swingarm holes if you have a 48t chainring or larger. Use the lower holes if using a 44t chainring.





17. Your bike is now ready to ride!